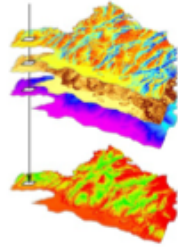


# GUEST LECTURES

## USING REMOTE SENSING FOR BIODIVERSITY ASSESSMENTS

UNIVERSITY OF ZURICH (IRCHEL CAMPUS), ROOM Y03-G91



MONDAY, 05.02.2018, 12:00 – 16:20

WEDNESDAY, 07.02.2018, 11:00 – 18:00

### USING REMOTE SENSING DATA TO INFORM SPECIES DISTRIBUTION MODELS

### USING REMOTE SENSING DATA TO INFORM ESSENTIAL BIODIVERSITY VARIABLES

#### SPEAKERS

**NIKLAUS ZIMMERMANN** (SWISS FED. INST. FOREST, SNOW & LANDSCAPE)

**PETER VERBURG** (VU AMSTERDAM)

**WALTER JETZ** (YALE U)

**THOMAS DIRNBÖCK** (ENV. AGENCY AUSTRIA)

**XAVIER MORIN** (U MONTPELLIER)

**MICHAEL ASHCROFT** (U WOLLOGONG)

**ERLE ELLIS** (U MARYLAND)

**NIGEL YOCCOZ** (U TROMSØ)

#### SPEAKERS

**JEANNINE CAVENDER-BARES** (U MINNESOTA)

**DAVID SCHIMEL** (JPL/NASA)

**PAUL MORECROFT** (HARVARD U)

**NESTOR FERNANDEZ** (GEO BON)

#### PANEL DISCUSSION

MICHAEL SCHAEPMAN (U ZURICH) WALTER JETZ (YALE U)  
NICOLAS COOPS (U BRIT. COLUMBIA) DAVID COOMES (U CAMBRIDGE)

More information: <http://www.globdiversity.net/news-events/international-workshops/>